



Recycling Authority July 2017

20000 West Eight Mile Road | Southfield MI
248-208-2270 | www.rrrasoc.org

Batteries Don't Belong in the Recycling Bin




Batteries of ALL types (alkaline, lithium-ion, rechargeable, automotive, button cell, etc.) pose many dangers to people and the environment and do NOT belong in the recycling bin.




Your recyclables are delivered to the ReCommunity-RRRASOC materials recovery facility (MRF) where employees sort material by hand. Those employees are in direct contact with every piece of material that is delivered to the MRF.

The corrosive acids in batteries can cause serious burns to employees' eyes and skin as well as cause damaging and devastating fires in the materials recovery facility.

Got Batteries? Here's What To Do!

Type of Battery	Disposal Instructions
Rechargeable - Nickel Cadmium, Nickel Metal Hydride, Lithium Ion, Nickel Zinc 	<i>Rechargeable batteries contain heavy metals and should NOT be disposed in a landfill.</i> They are accepted at RRRASOC Household Hazardous Waste events and local retailers such as Batteries Plus Bulbs and Best Buy. Find additional drop-off locations on call2recycle.org .
Alkaline (non-rechargeable, dry-cell) 	<i>While not ideal, used alkaline batteries can be placed in the trash to be landfilled. They do not contain toxic materials.</i> They are accepted at RRRASOC Household Hazardous Waste events.
Lead Acid 	<i>Lead acid batteries contain toxic substances and should NOT be disposed in a landfill.</i> Retailers are required to accept a used lead-acid battery with the purchase of a new one. Battery core charges apply. They are accepted at RRRASOC Household Hazardous

	Waste events and local retailers such as Batteries Plus Bulbs. Find additional drop-off locations on call2recycle.org .
Lithium Single Use and Button Cell (Lithium or Li; not to be confused with rechargeable Lithium Ion) 	<i>These batteries contain small amounts of toxic heavy metals and should be recycled.</i> They are accepted at RRRASOC Household Hazardous Waste events. Find additional drop-off locations on call2recycle.org .

For information on RRRASOC's Household Hazardous Waste events, visit rrrasoc.org.

Fire Rover Helps Protect the MRF from Fires

The Resource Recovery and Recycling Authority of Southwest Oakland County (RRRASOC) and our operating partner, ReCommunity Recycling, installed the Fire Rover system to protect the materials recovery facility from fires. Watch the video to learn how it works and why it was implemented.



NOT SURE WHAT TO DO WITH
STUFF?

COMPOST? RECYCLE? DONATE? TRASH?

GET CONNECTED TO FIND OUT!

MOBILE APP ONLINE SOCIAL E-NEWS

RRRASOC | THE RECYCLING AUTHORITY

Not Sure What To Do With Stuff?

The Recycling Directory is a searchable, intuitive tool that provides you with RRRASOC specific information and tips on recycling, composting, reuse or disposal options.

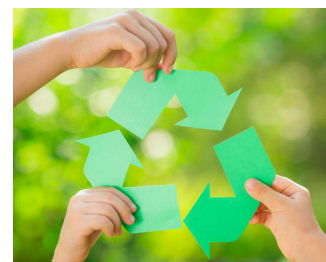
The free mobile smartphone app is available from your App Store or Google Play. Search for "Recycling Authority".

The Recycling Directory is also available at the rrrasoc.org website.

Recycle More and Recycle Right.

Are you sure you know what can be recycled? Recycle right by checking out our [Curbside Recycling Guidelines](#).

Remember...NO plastic bags, NO garden hoses, NO Styrofoam, NO flexible packaging. NO needles or syringes. Place recyclables loose in your bin or cart.





Resource Recovery and Recycling Authority of Southwest Oakland County (RRRASOC) 248-208-2270 | mcsapo@rrrasoc.org | rrrasoc.org

Download the "Recycling Authority" mobile app for iPhone and Android

A Municipal Solid Waste Authority Serving the Member Communities of:
Farmington | Farmington Hills | Milford | Milford Township | Novi | South Lyon
Southfield | Walled Lake | Wixom